

**THE SALVATION ARMY**  
SOUTHERN AFRICA TERRITORY  
**ANNUAL REPORT | 2023**

## CONTENTS

Letter from the Territorial Commander	2
Letter from the Chairman of the Advisory Board	3
140 Years of Caring	4
Organisational Structure	5
Who we are - Organogram	6 – 7
The History of The Salvation Army	8 – 9
Social Impact	10 – 11
Education and Development Centre	12 – 13
Central Division	14 – 15
Eastern Cape Division	16 – 17
Eastern KwaZulu-Natal Division	18 – 19
Limpopo Division	20 – 21
Mid KwaZulu-Natal Division	22 – 23
Mpumalanga and Eswatini Division	24 – 25
Northern KwaZulu-Natal Division	26 – 27
Western Cape Division Incorporating Namibia and Island of St Helena	28 – 29
Financials	30 – 31
Supporters, Donors and Friends	32
Contact Us	33

---

*“Therefore encourage one another and  
build one another up”*

1 Thessalonians 5:11

## LETTER FROM THE TERRITORIAL COMMANDER



Dear Friends,

The relevance of the Christian community in responding to social ills is under immense scrutiny in South Africa and The Salvation Army continues to be responsive to emerging social needs. This we do over and above a range of social services provided across all age groups throughout the country and beyond our borders.

Our attempt to ensure relevance in our response has meant that we have embarked on refining our services to a point where they are needed the most. We have ongoing programmes in addressing issues of childcare and protection, substance abuse, care for the elderly, anti-human trafficking and the homeless.

We are grateful that we were able to provide the much-needed care to the homeless during the extreme cold weather conditions recently experienced in the country. This response included issuing of blankets and a hot meal. During the year under review, we were also able to respond to those who lost their loved ones and belongings through national disasters and provide material support such as meals, clothing, mattresses and blankets. This, together with psychosocial and pastoral support meant

that we could lessen the burden of the communities that were hardest hit.

We are celebrating 140 years of The Army's existence in South Africa under the theme 'Growing Side by Side'. Our celebrations for this significant milestone took place in Albert Park in Durban – an area marred by substance abuse and crime. In true Army fashion, this gave us an opportunity to reach out to those communities and invite them to take part.

We most definitely would not have achieved all of the above without the support from the public; through individuals, religious groups, the business sector and the donor community. We are very grateful for the continued support we receive that continues to enable us to reach out to those in need.

**God Bless You.**

**Torben Eliason  
Commissioner  
Territorial Commander**

## LETTER FROM THE CHAIRMAN OF THE ADVISORY BOARD



The Salvation Army is an international Christian organisation that has been providing humanitarian and social services for over 140 years.

Celebrating 140 Years of Hope and Service!  
For over a century and four decades, The Salvation Army has stood as a beacon of hope, love, and compassion in communities around the world. Our journey began in 1865 when our founders, William and Catherine Booth, embarked on a mission to bring salvation and assistance to the most vulnerable and marginalised.

Since then, we've been on a remarkable journey, serving countless individuals and families in their times of need. Through wars, pandemics, natural disasters, and economic hardships, The Salvation Army has remained unwavering in its commitment to "Doing the Most Good."

### What we've achieved in 140 years

**Emergency Relief:** We've been the first on the scene during disasters, providing food, shelter, and support to those affected.

**Social Services:** We've offered a helping hand to the homeless, the hungry, and the hurting, providing food, housing, addiction programmes, and more.

**Spiritual Support:** We've shared the message of God's love and hope, offering spiritual guidance to those seeking solace.

**Youth and Family Programmes:** We've invested in the future, empowering young people and strengthening families through education and support.

**Community Development:** We've worked to uplift entire communities, addressing systemic issues and fostering positive change.

**Global Reach:** We've extended our services to more than 130 countries, demonstrating the power of compassion on a global scale.

As we mark 140 years of service, we express our gratitude to the countless donors, volunteers, and partners who have made our mission possible. Together, we've transformed lives, offered second chances, and built a brighter future for millions.

Today, as we look to the future, we are more committed than ever to our mission of serving suffering humanity, without discrimination. With your continued support, we'll reach new heights in our efforts to bring love, healing, and hope to those who need it most.

Thank you for joining us on this incredible journey of service. Here's to 140 years of making a difference, and to many more years of changing lives!

Warm wishes

**Johanna Makgalemele-Mukoki  
Chairman of the Advisory Board**

# 140 YEARS OF CARING



The Salvation Army is a Christian Church founded by William Booth in England in 1865. A London minister, he abandoned the conventional concept of a church and a pulpit, instead taking his message to the people where it would reach the poor, the homeless, the hungry and the destitute.

*“While women weep, as they do now,  
I’ll fight  
While little children go hungry, as they do now,  
I’ll fight  
While men go to prison, in and out, in and out, as they do now,  
I’ll fight  
While there is a drunkard left,  
While there is a poor lost girl upon the streets,  
While there remains one dark soul without the light of God,  
I’ll fight-I’ll fight to the very end!”*

**William Booth 1829 - 1912**

The work of The Salvation Army in Southern Africa began with the arrival of Majors Francis and Rose Simmonds and Lieutenant Alice Teager in Cape Town harbour on Saturday 24 February 1883. Undaunted by the enormity of the task that lay ahead, they quickly got to work laying the foundations of The Salvation Army in South Africa.

As a worldwide evangelical movement, the work of The Salvation Army is motivated by faith and values. As a Christian organisation, our love of Jesus Christ inspires us to care for those in need.

## OUR MISSION

To provide caring without discrimination, as a practical response to specific, identified, urgent needs in the community and as an expression of the love of Christ;

To facilitate the improvement of disadvantaged communities as an expression of the love of God and moving towards sustainable development;

To encourage change in harmful addictive behaviour through development of a spiritual relationship with God.

## OUR OBJECTIVES

Our objectives are the advancement of the Christian religion, the relief of poverty, and other charitable good deeds beneficial to society and the community as a whole.

## OUR VALUES

Our values of human dignity, justice, hope, compassion and community are echoed throughout our work.

# ORGANISATIONAL STRUCTURE

The Salvation Army is an international organisation operating in more than 130 countries and co-ordinated by International Headquarters (IHQ) in London, United Kingdom. At the helm of the Organisation is the General who is supported by leadership within the five zones viz. Africa, the Americas and Caribbean, Europe, South Asia and South Pacific and East Asia.

The Territorial Commander acts as the representative of the General in The Salvation Army Southern Africa Territory. Falling directly under the Territorial Commander is the Governance Board comprising the Territorial and External Cabinets, the Territorial Advisory Board and Moral and Social Issues Council (MASIC).

The Governance Board is entrusted with the governance of The Salvation Army and is supported by a written Constitution.

The Salvation Army is both a church and a welfare organisation. Outreach into communities is facilitated through our Corps (churches) and includes weekly/daily meals to the impoverished, emotional and moral assistance to communities and emergency relief to victims of natural disasters such as fires and floods. During the winter months, blankets are distributed to the homeless.

The welfare work of The Salvation Army covers a diverse range of social issues. These programmes are accomplished through our Social Centres throughout South Africa.

The Salvation Army Southern Africa Region comprises the following Divisions

Central Division

Eastern Cape Division

Eastern KwaZulu-Natal Division  
Northern KwaZulu-Natal Division  
Mid KwaZulu-Natal Division

Limpopo

Mpumalanga and Eswatini Division

Western Cape Division, incorporating Namibia and the Island of St Helena

### Governance Board

Commissioner Torben Eliasen  
Commissioner Deise Eliasen  
Lt. Colonel Jabulani Khoza  
Lt. Colonel Thomas Dlamini  
Ms Masaccha Mbonambi (Non-Executive)  
Mr DT Ndhlovu (Non-Executive)  
Mr Simon Madi (Non-Executive)  
Mrs Lynette Muller (Non-Executive)  
Major Brendan Browski  
Captain Mteteleli Memani  
Lieutenant Mandisa Ntuli  
Mr Thulani Dlamini (Secretary)

### Territorial Cabinet

Commissioner Torben Eliasen  
Commissioner Deise Eliasen  
Lt Colonel Jabulani Khoza  
Lt Colonel Fikile Khoza  
Lt Colonel Thomas Dlamini  
Major Brendan Browski  
Captain Mteteleli Memani  
Mr Thulani Dlamini (Secretary)

### External Cabinet

Lt Colonel Doris Dlamini  
Major Leanne Browski  
Captain Nonkosaza Memani

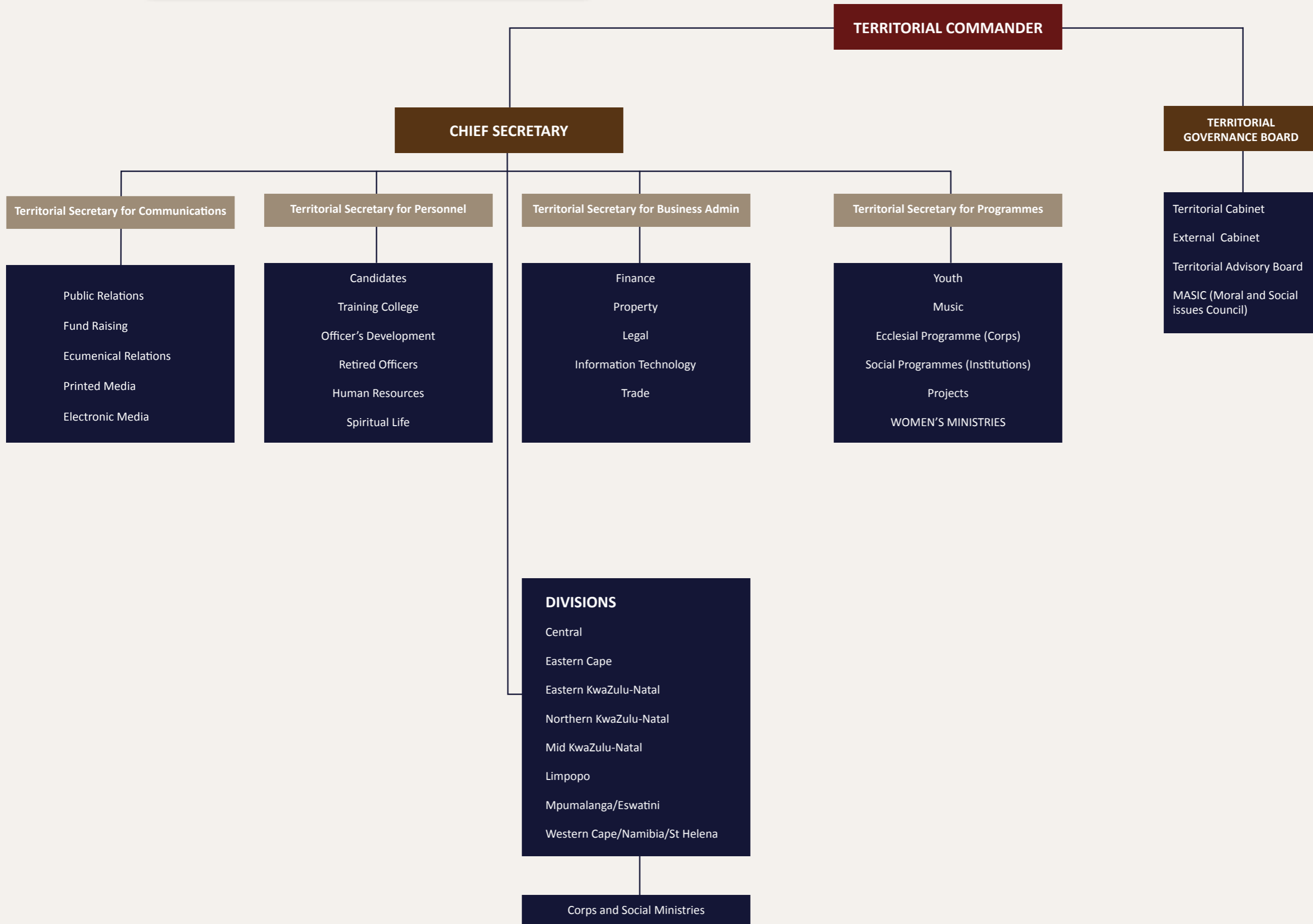
### Territorial Advisory Board

Mrs Johanna Mukoki, Mr Scott McRae,  
Mr Carl Socikwa, Mr Jerrie Mabena,  
Mr Sihle Mthethwa, Commissioner Torben Eliasen,  
Commissioner Deise Eliasen, Lt Colonel Jabulani Khoza,  
Lt Colonel Fikile Khoza, Captain Mteteleli Memani,  
Major Thataetsile Semeno (Secretary),  
Mr Leon Viljoen (Invited for financial reports)

### MASIC (Moral and Social Issues Council)

Major Brendan Browski (Chair)  
Lieutenant Colonel Lenah Jwili  
Captain Sindisiwe Nkosi (Secretary)  
Lieutenant Owen Mutize  
Pamela Madonsela (Youth Representative)  
Palello Lebaka (Soldiers Representative)  
Dr Busi Qwabe (Medica)  
Mrs Sibongile Buthelezi (Social Worker)  
Major Thataetsile Semeno  
Lieutenant Colonel Thomas Dlamini  
Captain Juanita Wright

# WHO WE ARE



# THE HISTORY OF THE SALVATION ARMY

*“Saving Souls, Building Saints and Serving Suffering Humanity”*



## ... TO PRESENT DAY – 140 YEARS OF SERVICE

Years of service have taught us the value of a strong, organised infrastructure. Today, The Salvation Army has a Home League with membership of 10,000. It was established for women in the early 1900s in response to the appalling home-life and living conditions of so many people in South Africa.

The Encouragement and Enterprise initiative introduced in the early 1960s has given rise to many Goodwill Centres throughout the country. They provide shelter and resources for individuals and families in crises.

It is initiatives such as these which have enabled The Salvation Army to not only move smoothly into a new millennium, but also to meet the challenges of a Democratic South Africa.

Today, The Salvation Army operates in eight Divisions in South Africa as well as in Eswatini, Namibia and the Island of St Helena. The Territory is known as The Southern Africa Territory and comprises 159 Corps in total and several Outposts, Envoys and Corps Plants. Outreach into communities is facilitated through our Corps and Centres and includes regular meals and blankets to the homeless, pastoral assistance to communities and emergency relief to victims of natural disasters.

The welfare work of The Salvation Army covers a diverse range of social issues which are accomplished through the following Programmes:

### CARE FOR THE AGED

The Salvation Army's Eventide and Age-Care Centres provide accommodation for the elderly. The programme is available to those who are disadvantaged, marginalised and vulnerable and aims to enhance human dignity while providing a high standard of shelter, food, clothing and healthcare.

### CHILDREN'S CARE (including Early Childhood Development)

The Salvation Army has several Child and Youth Care Centres for children and teens who are either orphans or have been committed by the Courts. The children are accommodated in residential facilities and attend local schools. They are given professional assistance to overcome the trauma of abuse that they may have experienced in the parental home. Every effort is made to unite the child with the family with the assistance of professional counselling.



The Salvation Army runs 15 pre-school crèches throughout South Africa. Apart from providing a stimulating and safe environment, the crèches provide the children with healthy well-balanced meals and snacks.

### SUBSTANCE DEPENDENCY REHABILITATION

Patients are accepted on a voluntary basis as this contributes to a more positive outcome. An intensive therapy and pastoral programme is offered under the direction of social workers, psychiatrists, a staff nurse and pastoral counsellors.

### GENDER BASED VIOLENCE

Residential services are rendered to distressed and abused women and their children in two facilities. These facilities provide a safe haven where the victim and her children can find refuge and a path to healing. Professional counselling and capacity building programmes maximise the residents' potential of becoming self-reliant and independent.

### FAMILY CARE

Unemployment and retrenchment have placed many families under financial and emotional strain. The Salvation Army has two goodwill centres for the homeless, those with drug-related problems and victims of rape and human trafficking. Residential care for a maximum of six months is provided and residents are encouraged and assisted with finding employment.

### PSYCHIATRIC CARE

Residential care for psychiatric patients who pay only a portion of their old-age or disability pension towards professional care, treatment and board and lodging. Emphasis is on training residents to care for themselves and to develop self-worth.

## FROM SMALL BEGINNINGS – THE FIRST 20 YEARS ...

**1865:** William Booth forms The Salvation Army – “Christianity with its sleeves rolled up.”

**24 February 1883:** Major Francis Simmonds, his wife Rose and Lieutenant Alice Teager dock in Cape Town. Known as “The Army of Three” they begin laying the foundations of The Salvation Army in South Africa. Within three years they are instrumental in establishing 21 Corps, with 46 officers in the field.

**4 March 1883:** The first meeting is held. As today, all were welcome to attend irrespective of race, colour or creed.

**1884:** Alice Teager opens the first Rescue Home for girls in Port Elizabeth. This was before official social work had been initiated in this country.

**1885:** Colonel Thurman appointed to take over The Salvation Army's operations in South Africa and Port Elizabeth becomes the headquarters of The Salvation Army. His introduction of Salvation Riders, using riders on horseback, means that many more people can be reached.

**Mid 1885:** Commissioner George Scott Railton begins his powerful Salvationist work in Durban, Pietermaritzburg and Zululand.



**1886:** The Army arrives in the newly formed Johannesburg which is essentially a shanty town with rough and make-shift dwellings. This leads to the pioneering of the Pretoria Corps which operates from a shop in Church Street and, shortly thereafter, Lieutenant Jessie Daniels leads men and women to God in Barberton in 1887.

**1891:** First Zulu, Joel Mbambo Matunjwa is converted to Christianity. He became a legendary figure in Army history as he brought hundreds of his people to Christianity.

**1900:** First Army Red Shield hut erected. This was the start of The Salvation Army's global ministry of compassion.

**1904:** Port Elizabeth opens a Night Shelter and Food Depot for men.

*Ref: Salvation Safari second edition October 1993*



# EDUCATION AND DEVELOPMENT CENTRE



On 1 March 2023, The Salvation Army Southern Africa Territory opened its doors to a new multi-purpose Education & Development Centre (EADC) comprising three streams of ministry training namely, College for Officer's Training (CFOT), Mission Team (MT) and Further Education.

The EADC is designed to accommodate the various leader development programmes thus centralising the territory's training initiatives under one roof. The vision is for it to become a centre of excellence that applies an updated comprehensive and complementary curriculum encompassing the Pre-CFOT, the CFOT and Post-CFOT programmes.

Project funding enabled the conversion of existing Salvation Army premises in Kensington into the current facility with a recreation room and dining hall, classrooms, library, main hall and three residential wings named in honour of Salvation Army veterans, Commissioner William Mabena, Commissioner Paul du Plessis and Lieutenant Colonel Grace Zwane. The centre is named in honour of Major Mbambo Matunjwa.

## THE CENTRE FOR OFFICER TRAINING (CFOT)

### Course Duration two years

The CFOT training programme for cadets reflects an integrated approach to training that focuses on three components – the heart, the head and the hands.

Cadet training focuses on 'being' – spiritual and character formation, sometimes referred to as the HEART component. Training emphasises forming attitudes and values that translate into Christ-like behaviour, essential to effective Christian leadership.

It also focuses on 'knowing' – scriptural, theological and missional knowledge often referred to as the HEAD component. Training must engage the cadets' minds and cognitive abilities through conceptual understanding and critical thinking around God's Word and Salvationism.

Lastly, training focuses on 'doing' – mission and ministry skills development, often referred to as the HANDS component. Training engages them in practical ministry where new knowledge has to be contextualised and applied in the field, and as a result, skills development progresses.

All three components (heart-head-hands) are needed for transformative learning, and therefore for healthy and effective officer-leadership. At the end of their training, cadets are ordained and commissioned as Officers of The Salvation Army and receive an appointment where

*"If you find it in your heart to care for somebody else, you will have succeeded."*

Maya Angelou

they are expected to go and fulfil the mission of God and The Salvation Army, "to save souls, grow saints and serve suffering humanity."

It is important to note that some cadets enter the college as married couples with children and in this case, the family is accommodated at the CFOT with child care support while parents are engaged in training.

In the current year, there are six second-year cadets in residence at the EADC. The session is named "Reflectors of Holiness" and includes one married couple with a young child. We pray for a successful completion of training for all 6 cadets by December 2023.

### Quotes from "The Reflectors of Holiness" session 2022 - 2023

*"At last I'm here after leaving the secular world to pursue my dream of doing God's work and spreading His Word."*

**Cadet Mzwakhe Ngobeni**

*"My mum is a Salvationist so I found The Salvation Army through her. I'm so happy to be here because I'm growing spiritually and feel that I was called to do this."*

**Cadet Nosipho Ntuli**

*"Trying to fulfil the will of God brought me here. Both my parents are Salvationists."*

**Cadet Philani Khumalo**

*"God had a plan for my life. Although I went to University after writing matric, I soon realised that God's plan for my life is not my plan. I feel very blessed to have been accepted at the College for Officer's Training."*

**Cadet Mdumiseni Buthelezi**

*"I am here because of the call that God has placed on my life. From a very young age I denied that call many times, but God always places you where He needs you."*

**Cadet Sibongile Ngobeni**

*"Being at the College for Officer's Training has brought me so much joy and has deepened my relationship with God. I am happy to be serving Him."*

**Cadet Anesu Mbofana**

## MISSION TEAM (MT)

### Course Duration one year

The Mission Team was started in 1997 in the Central Division and ran successfully until financial constraints led to its closure in 2010. Despite its discontinuation,

the programme's impact has lived on through the lives and ministries of numerous dedicated leaders. Many individuals went on from their Mission Team year to become Salvation Army Officers or to engage in full-time ministry with other evangelical churches, or to serve as volunteers in part-time ministry in their local communities. As part of the project, a decision was made to re-launch the Mission Team programme this year at the newly renovated EADC.

The current Mission Team consists of 15 Salvationists from seven divisions across the territory between the ages of 10 and 44 years old. Thirteen out of the fifteen have applied to enter the CFOT programme in 2024 and there is currently a candidate assessment process underway to screen applicants for suitability. Those who may not go on to become Officers, still having been equipped with a year of training in mission and ministry, will return to their local churches and communities to make an impact for the kingdom of God.

## Further Education

The EADC also provides Officers with further education as well as training for the development of local leaders. Opportunities for in-service training is of exceptional importance as all leaders must be life-long learners who continue to develop their effectiveness in ministry through short courses, workshops and correspondence study. The EADC earlier this year hosted a "Walk Thru the Bible" seminar which was attended by Officers and local leaders who over two days were able to delve into the Old and New Testament with a trained facilitator, refreshing both their knowledge and passion for the Word of God, as well as sharing it with others.

The EADC is the result of a God-given vision that fulfils the objective of The Salvation Army as stated in Matthew 28: 19-20

*"Therefore go and make disciples of all nations, baptising them in the name of the Father and of the Son and of the Holy Spirit, and teaching them to obey everything I have commanded you. And surely I am with you always, to the very end of the age."*

As Catherine Booth, co-founder of The Salvation Army said, *"You are not here in the world for yourself. You have been sent here for others. The world is waiting for you!"*

## CENTRAL DIVISION



The Central Division is one of the largest divisions in The Salvation Army with its ministry stretching from Pretoria and Johannesburg in the north to Bloemfontein and Kimberley in the south.

The size of the Division is reflected in its diversity of language, culture, expressions of worship and service to the community at large. The Corps services are defined by the needs of the Community and include: basic soup kitchens, provision of warm clothes and blankets, especially in winter, and school uniforms and shoes for children attending the local schools.

Spiritual support is provided through women's meetings and prayer groups, weekend youth and children's clubs and Sunday church services.

**The Division comprises 36 Corps, 6 Corps Plants and 32 Outposts.**

### SOCIAL CENTRES

#### 3 CHILDREN'S HOMES

**Ethembeni** residential care for 60 babies and children aged 0 – 3 is based in Johannesburg, Gauteng.

**Bethany Children's Home** residential care for 110 abused and abandoned girls aged 6 – 18 is based in Soweto, Gauteng.

**Bethesda Children's Home** residential care for 32 children aged 2 – 6 is based in Soweto, Gauteng.

#### 2 EVENTIDE HOMES

**Emmarentia Eventide Home** is based in Johannesburg, Gauteng and cares for 40 Senior Citizens.

**Ephraim Zulu Senior Centre** is based in Soweto, Gauteng and cares for 100 Senior Citizens.

#### 2 FAMILY CARE/GOODWILL CENTRES

**Benoni Goodwill Centre** provides shelter for 62 men, women and children and is based in Benoni, Gauteng.

**Family Mission Centre** provides shelter for 55 men, women and children and is based in Krugersdorp, Gauteng.

#### 1 SHELTER FOR ABUSED WOMEN

**Beth Shan** cares for 15 abused women and their children and is based in Pretoria, Gauteng.

#### 1 PSYCHIATRIC HOME

**Mountain Lodge** cares for 60 residents and is based in Magaliesburg, Gauteng.

**6 CRÈCHES/CHILD CARE CENTRES** provide a safe and stimulating environment for over 300 children.

*"My heart was especially moved last night as we served people in our community."*

### HUMANITY ON THE STREETS OF JOZI

Winter is always a difficult time for the homeless and more so now, when there is such a high rate of unemployment in the country. Winter is cruel and winter is harsh especially for the homeless. While we complain about the bitter cold, endless rain and often snow that makes getting up in the morning so difficult, we at least have running water, albeit initially freezing cold, but slowly warming to a temperature that is acceptable to most. Not so for the homeless who often spend their nights in subways or bus shelters. If they have a blanket, or warm clothing, they sleep with 'one eye open' as very often they will wake in the morning to find that even these few possessions have been stolen. How then is it possible that these very people, whose lives are so desperate, are selfless enough to direct the traffic on busy streets and ensure that we all get safely to work on time?

Recently, Officers from around the territory took time out from their conference to care for the homeless people in Braamfontein. Thick soup, a blanket and a slice of bread were distributed. It was cold, bitterly cold, as snow had blanketed parts of the country. It was such a small thing for us to do and yet it was so gratefully received.

One of our officers Major Leanne Browski witnessed the following:

*"My heart was especially moved last night as we served people in our community. It was bitterly cold and people were deeply grateful for the blanket, warm soup and bread offered. As people were coming for a second helping, not knowing where their next meal would come from, a gentleman joined the back of the queue for the first time. As the soup came to an end, and the last cup was being poured, the man ahead of him in the queue selflessly stepped aside in order to allow this late arrival to take the last serving thus relinquishing his position and his portion for another who had less. Such kindness, such generosity, such humanity and such beauty! I walked away with a lump in my throat and a heart deeply challenged. Oh that my giving would reflect that kind of selflessness!"*

Supporting The Salvation Army means that you too are making a difference in the lives of the homeless, helpless and disenfranchised. Donations of blankets, food items and clothing not only in winter, but throughout the year, enables our officers to care for those who need it the most.



## EASTERN CAPE DIVISION



Stretching from the Indian Ocean in the east to the Karoo in the west, the Eastern Cape Division covers one of the poorest areas in South Africa. It is a province of socio-economic and geographic diversity. The coastal areas are beautiful and contain many tourist attractions, but further inland the region becomes dry and arid. Subsistence agriculture predominates and most of the communities have been hit hard by frequent droughts.

The Division has no Social Centres and serves the communities through Corps, Envoys and Outposts. Poverty, hunger and homelessness are rife in most of the areas and Corps leaders work tirelessly to raise funds and donations of food and blankets from companies and small businesses. When natural disasters strike, the leaders quickly mobilise to ensure that relief is provided.

The start of the new year kicked off with a bang as all Divisions were encouraged to join the Ignite Campaign which encapsulated the notion that 'Every fire starts with a point of ignition and once the spark has been ignited, it becomes a flame and has the potential to become a bright, hot, fiery, unquenchable fire!' This time of Ignite

was filled with possibilities for the Eastern Cape Division and, although we are small, we lit a flame in the area that many could see and feel and many people came to know Jesus on a whole new level. With our limited resources, this was something that we could do and we did it well!

The Salvation Army Corps in Mdanitsane, Eastern Cape conducted community feeding.

East London Corps, Eastern Cape spent the week engaging with and caring for the community in practical ways and through their regular kids' clubs.

On Saturdays, many Corps members went into the community, cleared the areas of rubbish, cut the grass and removed out-of-date posters.

God's hand and His work was evident for all to see.

**The Division comprises 18 Corps, 2 Envoys and 2 Outposts.**

*"A helping hand can be a ray of sunshine in a cloudy world."*

### JACOB'S STORY

Jacob\*, a 20-year old living in East London with his two younger siblings, Lesedi (aged 8) and Samuel (aged 14) was suddenly, and with very little warning given the task of looking after his brother and sister when both their parents died. With love and commitment, and to honour his parents, Jacob slipped into the role of parent and sole provider for his family. Just finished school, Jacob set his own dreams aside and found a job at a car wash to provide for them. Times were hard, but his commitment was immense.

Then in 2021, Jacob became ill and had to be hospitalised. Fearing that his siblings would be taken away by child welfare, he was relieved when his aunt arrived to assist. However, she too had commitments and had taken leave from her job to fill the gap and was fearful that she would be replaced while she was away.

In stepped The Salvation Army who helped Jacob and his aunt with the legalities, provided food to tide the family over and prayed with them on a daily basis. Thankfully, Jacob made a full recovery and was able to return to work and take care of his little family again.

*"If The Salvation Army had not assisted, I'm not sure what the outcome would have been. We are so dependent on them for our spiritual well-being. The children attend the weekly kids' club and I am involved with fellowship. On Sundays we attend the service. Thank you Salvation Army for always being there to help."*

*\*Names changed to protect identities.*



## EASTERN KWAZULU-NATAL DIVISION



Eastern KwaZulu-Natal (KZN) Division stretches from Empangeni in the south to Mbazwana, on the Mozambican border in the north. The community living in this area are plagued by poverty, tuberculosis and HIV/Aids. There are a number of child-headed households and teenage pregnancy is rife. Sharing a border with Mozambique results in high numbers of Human Trafficking.

Although this is a small area, our service to the community is significant. Our vision is to “minister to the needs of communities,” and this is done through outreach, education and engagement with the community we serve.

It was a difficult year for the Division, but our motto of “Keep showing up and serving suffering humanity” stood us in good stead to cope with the disasters that plagued our province.

First there was the looting which left many people unemployed and facing the stress of an uncertain future. Many small businesses were forced to close as the owners could not afford to carry insurance to cover their losses.

Then, just as the community was starting to recover, torrential floods hit many areas of the Division and this was something that we, as Salvation Army officers, had never experienced before.

Houses that moved from their yards.

Beautiful dwellings completely washed away.

People, some of whom had invested their life’s savings, wandering in a state of confusion and despair.

Loss, loss of life, loss of livelihoods, loss of property, loss of identity and self-worth.

The officers, staff and volunteers of The Salvation Army stepped up to assist. People were given shelter in community halls, day care centres and churches. We provided meals, stoves, groceries, blankets and mattresses. We gave them time to grieve and prayed with them for God to give them strength. For many, this was a new reality, they may never re-build the homes that they once had and living in community halls or with relatives may be permanent. No privacy, no place to call home and their livelihoods gone for good.

Life will never be the same and with this kind of trauma many are experiencing mental health issues. We continue to pray for and with these families, that the Lord will heal them and restore them.

**The Division comprises 18 Corps, 2 Envoys and 2 Outposts.**

*“Each of us as human beings has a responsibility to reach out to help our brothers and sisters affected by disasters. One day it may be us or our loved ones needing someone to reach out and help. Strength does not come from physical capacity. It comes from an indomitable will.”*

Nelson Mandela



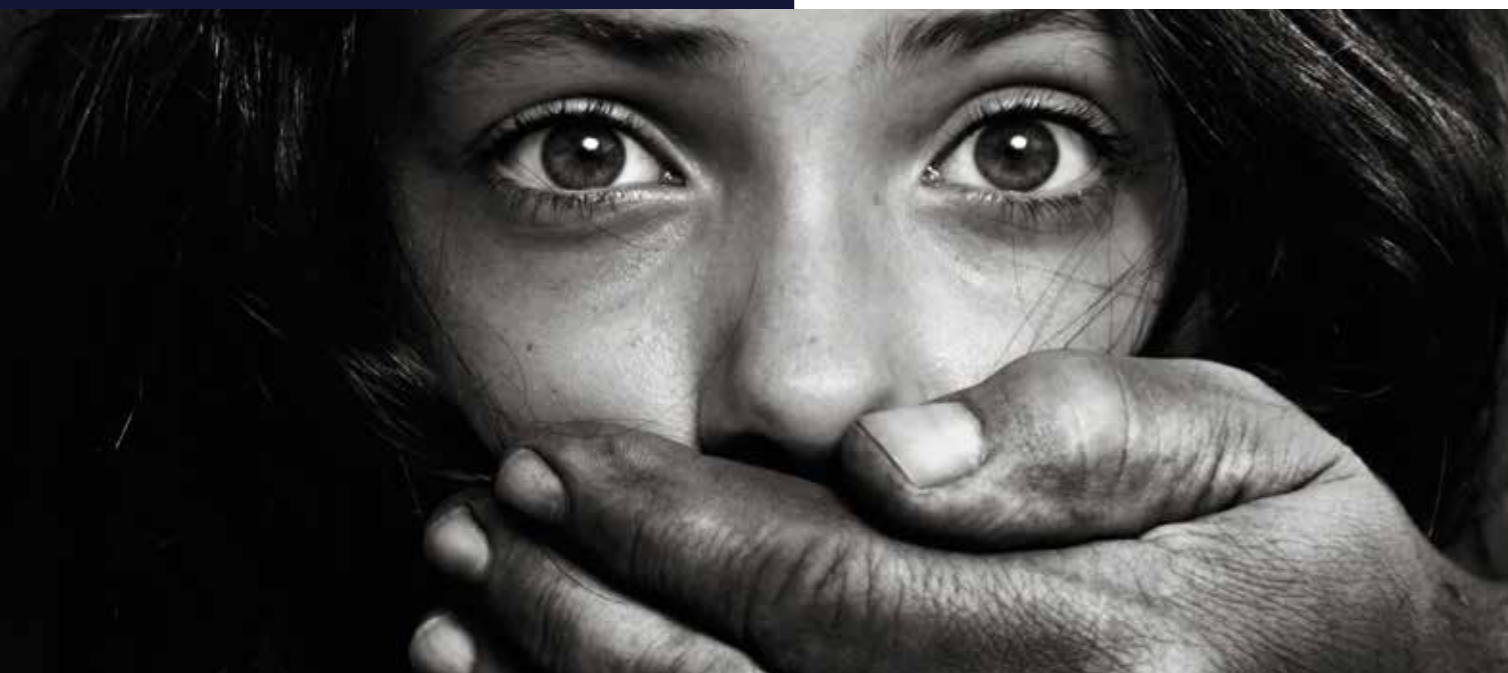
*“My livelihood is gone and everything has been taken away from me and my family. Without the help of The Salvation Army, we would not have survived.”*

*Initially I thought we had lost everything, but God is good and through The Salvation Army we have managed to rebuild our home, the children are back at school and slowly, but surely we are putting our lives back together.”*

*“It was a shock for us all. One day we had everything, a home, an income and food to put on the table. The next day we had nothing. The Salvation Army officers were amazing, they found us shelter, gave us food on a daily basis and prayed with us. If it hadn’t been for those angels of mercy, we would not have made it. To this day, they are still helping, and praying with them has uplifted us from the depths of despair.”*



## LIMPOPO DIVISION



The Limpopo Division of The Salvation Army is situated in the northernmost province of South Africa. The Division faces the challenges of high levels of hunger, poverty and people living with HIV/Aids. As the province shares borders with Botswana, Zimbabwe and Mozambique, communities are vulnerable to being trafficked over the borders. One of our priorities therefore is for the Division to provide education to the people at risk.

Many of our activities centre on education and training. Of interest is that so many of the community are shocked when they first hear of the dangers of human trafficking. Even though it is happening among them, they are still not aware that everyone is at risk.

*"It is right next door to us and we need to be careful,"* said a concerned citizen who attended one of our talks.

**The Division comprises 11 Corps, 6 Outposts and 2 Envoys.**

### SOCIAL CENTRES

**1 CRÈCHE/CHILD CARE CENTRE** provides a safe and stimulating environment for pre-school children.

### HUMAN TRAFFICKING THE FACTS:

In the 21/22 period, Human Trafficking doubled in South Africa. This can directly be attributed to the pandemic. Education and training was kept to a minimum during lockdown and this left our citizens vulnerable.

Another factor contributing to the rise in Human Trafficking is the unrelenting burden of load-shedding. Crime happens in dark places and with much of the country in darkness, human trafficking can flourish.

*"Their jewellery, cell phones and luggage were gone and to her horror, Jenny realised that she had been drugged and raped."*

### GUISE OF KINDNESS

This sickening story was related to a Salvation Army worker in Limpopo by a victim and ultimate survivor of human trafficking.

Jenny\* and her friend Fiona\* set off for a long weekend, filled with fun and laughter. On their way to a resort in Limpopo, their car broke down and they were stranded in a remote area just outside of Pretoria. Before they could phone for help, help arrived in the form of a bakkie with two very pleasant gentlemen who offered to check the problem. *"Don't worry,"* they assured the girls when they were unsuccessful, *"we can tow you to a garage and a mechanic can sort it out."*

Gratefully the friends jumped into the bakkie. When the scenery became unfamiliar Jenny began to feel uneasy. *"Where are we going?"* she asked the driver. *"No problem,"* he replied. *"We're going to a friend who knows all about cars. He'll get it going – and won't charge you a cent!"*

Feeling reassured, the girls relaxed and gratefully accepted a bottle of water. That was the last they knew until they woke up in a gloomy and filthy room, shared by several other young women who appeared to be sleeping – or drugged.

*"Dear God help us,"* Jenny prayed as she realised that she and Fiona were in trouble. Their jewellery, cell phones and luggage were gone and to her horror, Jenny realised that she had been drugged and raped.

Jenny was so disorientated, she had no idea what day it was, let alone what time of day. She felt humiliated and scared. After a while an aggressive woman entered the room and roughly grabbed Fiona. Jenny tried to prevent the woman from taking her friend away, but then blacked out again. When she came to and asked after Fiona, she was ignored.

Jenny lost all track of time. Her life was one continuous nightmare punctuated by being 'taken away' and forced to clean the room.

Some of the other women were foreigners who couldn't speak a word of English. Those who could, confirmed that when they were taken away, they too were forced to have sex with all sorts of strange men of all races.

Gradually Jenny realised she had to get out of this nightmare. She'd been repeatedly raped, physically attacked, pulled by her hair and suffered other abuse. She'd also lost a lot of weight. She managed to get a cell phone from one of the other captives, but it cost her dearly as in exchange she had to give up her meals. BUT the moment she held the phone her mind went blank – she couldn't remember a single contact number!

It was over a year from being taken captive before Jenny and the others were rescued in a police raid. All Jenny remembers of the event is a great number of policemen bursting through the doors and yelling *"Get down! Get down"*. She covered her ears in terror thinking this was the end of her. She couldn't immediately grasp that this was the end of her unspeakable degradation – of being a sex slave and punch-bag.

After being rescued Jenny was taken to a hospital where she received counselling and was kept on drips and antibiotics until well enough to move. Then she was taken to The Salvation Army Centre for abused women in Pretoria. It was here that she received counselling, love and care and the healing process began.

Jenny showed The Salvation Army worker the scars of her enslavement, the cut marks, bruises and other wounds inflicted over fourteen months of terror. She admits that she cannot remember a lot of what she'd gone through – and doesn't want to. Although devastated by the fact that Fiona is still missing, this brave young woman is determined to be 'whole' again and is now reunited with family.

*\*Names changed to protect identities.*



## MID KWAZULU-NATAL DIVISION



Mid KwaZulu-Natal (KZN) Division is an inland area of KZN that stretches from Pietermaritzburg to the Drakensberg mountain range. A diverse area, Mid KZN covers both wealthy tourist attractions and impoverished communities. As a result, community engagement in the Division is fast-growing. Our three-pronged strategy of “Saving Souls, Building Saints and Serving Suffering Humanity”, first envisaged by William Booth in 1865, is witnessed by the growth of women and children’s ministries, men’s fellowship, Bible studies, kids’ clubs and visitations. Feeding schemes and soup kitchens are run regularly throughout the area.

Mid KwaZulu-Natal was hardest hit by the floods in 2022 with severe damage to roads, health care, schools and communication. Over 12,000 homes were destroyed and 40,000 people were displaced. Tragically 448 people lost their lives. The Division quickly mobilised and stepped in to provide relief. Our staff and volunteers worked day and night to provide food parcels and hygiene packs, blankets and foam mattresses. Seven water security tanks/pumps were erected and 10,000 water purification packages were distributed. Over time, families were given building vouchers to assist them in re-building their homes. The emergency relief given was a huge undertaking and we learned much in the process, including the realisation that together with practical support, we also needed to provide emotional support not only to the community, but also to our staff and volunteers.

**The Division comprises 23 Corps, 3 Corps Plants, 5 Envoys and 16 Outposts.**



### SOCIAL CENTRES

#### 1 CHILDREN’S CENTRE

**Joseph Baynes Child and Youth Care Centre**, is based in Pietermaritzburg, and provides residential care to 81 children from new-born to 18 years.

#### 1 EVENTIDE HOME

**Thembela Eventide Home**, is based in Durban, and provides residential care to 50 residents.

**2 CRÈCHE/CHILD-CARE CENTRES** based in Mathunuwa and Hammarsdale, provide a safe and stimulating learning environment for pre-school children.

*“If you can dream it, you can do it.”*

Walt Disney

### JOSEPH BAYNES CHILD AND YOUTH CARE CENTRE 100 YEARS OF CARING FOR CHILDREN

Joseph Baynes House’s mission is to preach the Gospel of Jesus Christ and meet human needs in His name without discrimination.

#### Where it all began

In the early 1920’s Joseph Baynes gifted one of his disused factories to James Hay, High Commissioner of The Salvation Army. His wish was that two homes be developed – one for men and the other for boys. On 8 March 1923 in the presence of city dignitaries and the Territorial Commander of The Salvation Army in South Africa, Joseph and Sarah Baynes opened the doors to the Boys’ Home. Prior to the opening, Joseph Baynes had met the Founder of The Salvation Army, William Booth, on a voyage to England and was impressed by the aims and methods of The Salvation Army. In 1950, the Boys’ Home moved to Royston Road, Mountain Rise and then again to 89 Trelawney Road, Pentrich, where it was officially opened on 5 October 1968.

The Home has always sought to respond to the needs of the community. As a result, it was decided in 1992 to admit girls to the Home and re-register as a Children’s Home. At the same time there was an increasing need for a facility to care for HIV positive babies. Our Home responded to this need and was the first Residential Child Care facility in KwaZulu-Natal to provide residential home care for HIV positive children. In 2015 in compliance with the new Child Care Act, the children’s home was re-registered and changed its name from Joseph Baynes Children’s Home to Joseph Baynes Child and Youth Care Centre (CYCC).

Joseph Baynes CYCC continues to receive support in many different ways from the Baynesfield Board of Administration (Trust). In recent years, the Baynesfield Trust installed solar panels, solar geyser’s, inverters and batteries which has helped the home provide electricity during load shedding and has significantly reduced our electricity bill.

One hundred years later, the home is still managed by The Salvation Army and looks after 81 children aged new-born to eighteen. The majority of the children are from disadvantaged backgrounds irrespective of colour, race and religion. Our home continues to be full to capacity and we constantly receive phone calls requesting admission. We work very closely with case workers of various agencies and are also involved in re-uniting

children with the family or placing them in foster care. The building is old, but with the continued support of our valued donors, we are able to keep repairing and replacing as required. We were thrilled this year to receive a sizeable donation from one of our committed donors and this has resulted in us replacing the old asbestos roofing with IBR. This has made a huge difference, as the asbestos roofing was a safety hazard for the children.

Joseph Baynes continues with its mission to preach the Gospel of Jesus Christ and meet human needs in His name without discrimination, by providing a compassionate residential facility for children. The dignity, self-worth, rights and responsibilities of the individual resident, family and staff are always respected, and through care, management and treatment, we will continue to help children to reach their full potential as responsible members of the community.



## MPUMALANGA AND ESWATINI DIVISION



The needs of the communities of Mpumalanga and Eswatini are extensive, and the members of The Salvation Army Corps and Outposts bring the necessary wisdom, experience, skills and a genuine willingness to serve, that makes a significant difference in the lives of the people.

The services this division provide to the community include ministering in the name of the Lord Jesus Christ, home-based care to the sick and bereaved, and the creation of awareness around human trafficking.

The soldiers and officers make an impact through open-air ministry, kids' clubs and women's ministries. Discipleship classes are held at every Corps and senior citizens, who have never had the opportunity to finish school, are enlisted in a thirteen-week programme from which they will graduate with the skills and commitment required to grow in the Lord. As a result of this, the division is seeing significant spiritual and numerical growth.

In Eswatini, The Salvation Army has developed a medical programme which has earned them accolades from the Eswatini Government.

**The Division comprises 14 Corps and 5 Outposts.**

### SOCIAL CENTRES

#### 1 PRIMARY HEALTH CLINIC

Msunduzi Community and Primary Health Clinic, is based in Msunduzi, Eswatini.

2 CRÈCHES/CHILD CARE CENTRES, situated in Barberton and Kanyamazane provide a safe and stimulating environment for 120 pre-school children.

*"Hope lies in dreams, in imagination, and in the courage of those who dare to make dreams into reality."*

Jonas Salk

*"Small opportunities are often the beginning of great enterprises"*

Demosthenes

### A BRIGHT FUTURE FOR YOUNG PEOPLE

The Division has taken the incentive by setting up ambitious and exciting projects to combat the massive (50%) unemployment among the youth in Eswatini. The Youth Development Project, sponsored by the Norwegian Agency for Development Co-operation – NORAD, is the main thrust of this dynamic programme. The sponsorship covers participants' training, provides seed capital and support for their business ventures. The project comprises two phases.

#### PHASE 1

Community leaders identified 140 young adults (aged 18-30) living in the rural areas of Eswatini, to participate in this enterprise. A one-year course, offered by Junior Achievement SA, trained them to set up a business by learning how to prepare a business plan, draw up a budget, market their product or service, prepare financials, open a bank account and register a business.

#### PHASE 2

Each participant had to come up with a business idea, and with the supervision of a team co-ordinator, equipment was purchased, the business was registered and a business bank account opened. All business initiatives were the participant's own ideas.

The selected 140 participants were split into seven business groups. The concepts put forward were two cattle feed lots, a restaurant, a catering business, a garden service, and two piggeries.

During the Covid lockdowns some of these businesses had to be placed on hold, but it was most encouraging to see how, in the face of adversity, these young entrepreneurs took the initiative and moved forward with their business plans. One enterprising young man started a piggery at home, built his own structure and now has 40 pigs. As a result, his business is already trading and bringing in an income.

Another group who live in Dlangeni, predominantly a farming community, approached their tribal authorities for some land and were granted five acres. The group, consisting of twelve people, worked hard digging and preparing a portion of the land in which to plant maize. They were extremely proud of their first crop, which they harvested and sold, using the money to fund their piggery business. Brick by brick they built the structure to house the pigs and then erected a fence around the property. They bought fifty three-month old piglets which they took to market three to four months later.



The catering business, started by the group in Sidwashini is prospering. The business caters for all types of occasions, and not surprisingly they have found funerals to be the most lucrative.

The garden service group is working with a number of municipalities in Mbabane. In addition to maintaining gardens, they also offer a landscaping service.

The young people in all these groups are an asset to their communities and share the knowledge they have gained to children in schools, thus giving them hope for a better future, and encouraging them to dream.

In these very rural areas most young people don't have many opportunities after leaving school. Work is scarce and high youth unemployment exacerbates teenage pregnancies, crime and drug use.

Most of these youngsters come from very poor families, but despite this, in their culture, they are still expected to provide support for the rest of the family straight after leaving school. Some have been through the Orphans and Vulnerable Children\* programme and, now that they're grown up, the question is how can they be helped to become self-sufficient? The Salvation Army has found a way and intends rolling out this programme in other divisions.

*\*The Orphans and Vulnerable Children (OVC) programme targets orphaned children up to 18 years as well as children who have been abused, are disabled or are living with sick parents or grandparents. The programme provides school bursaries, food parcels and school uniforms and also offers support through home visits to those who have mobility and transport issues. Psychosocial support provides children with coping mechanisms and the skills required to accept and manage their difficult circumstances.*

# NORTHERN KWAZULU-NATAL DIVISION



Northern KwaZulu-Natal (KZN) Division is situated within the AbaQulusi Municipality and Zululand district. A small Division that covers a large area, Northern KZN Division provides spiritual support to the community and, in cases where the Division does not have sufficient financial resources, links the vulnerable with accessible government resources and in this way, continues to touch lives and make an impact.

The beauty of the surroundings belies the pain and suffering of the people who live in this area. The community is plagued by poverty, ignorance and the devastation to family life is wrought by diseases such as TB and HIV/Aids. Children are orphaned and left to care for themselves and often older children care for their younger siblings. The loss of human dignity is unspeakable and not one that is familiar to many of us.

**The Division comprises 16 Corps, 1 Corps Plant and 10 Outposts.**

## SOCIAL CENTRES

### 1 PRIMARY HEALTH CARE CENTRE

**Mountain View Clinic** provides medical support to the community and manages several mobile clinics in the area.

### 1 BOYS' HOSTEL

**The William Booth Boys' Hostel** accommodates boys who are learners at Mathunjwa High School in Vryheid.

**1 CRÈCHE/CHILD-CARE CENTRE**, based in Vryheid, provides a safe and stimulating learning environment for pre-school children.

### PROVIDING HEALTH CARE TO REMOTE AREAS

In 1911 The Salvation Army took ownership of the Mountain View Hospital farm to provide basic health care and midwifery services to communities in the area. Our well-equipped mobile clinic pays weekly visits to 39 communities a month – some in extremely remote and hard to reach areas – bringing much-needed free primary health care to more than 2,000 people.

*"We provide the sick with the best possible chance of recovery, and offer as many health facilities as possible, and we also bring the joy of God's love into the lives of many."* comments the Administrator.

### THE BOYS' HOSTEL

Next to the clinic is the William Booth Boys' Hostel, where we accommodate 165 learners attending Mathunjwa High School. As children are the future, we encourage and inspire them to reach their full potential. Keeping the clinic and hostel stocked is a logistical and expensive exercise. Vryheid is the closest town for supplies and is 110 km away. The journey takes about one and a half hours and the goods purchased are very expensive. However, the officers and staff remain committed, even in the face of adversity, to provide the best possible care to both centres.

*"It's not what happens to you, but how you react to it that matters."*

Epictetus

## THE DIFFICULTIES OF TEENAGE LIFE IN NORTHERN KZN

In Northern KZN there is very little hope for a 'normal' teenage life. No parties, no socialising with friends, not hours of time to spend on social media and the warmth and comfort of loving parents is for most, just a dream or a distant memory.

Pinky Khumalo's\* mother died when she was just fourteen. She never knew her father. Although the youngest of three sisters, the responsibility fell on her to look after the family while their older brother worked in Durban to help financially. Years of struggle followed, but today Pinky, 22, is a mother of two small children – three-year-old Lubanzi and one-year-old Elihle. Pinky's sisters and her mother have both died, but Pinky perseveres in her quest for a better life for her and her children.

*"I don't want my kids to suffer like I did, I want to give them a good education so they can have a better life,"* she says with a determination that makes us believe she will succeed.

Nompumelelo Nkosi\* was still at school with a toddler at home when her parents died. Alone and frightened, she had to face a hostile world and learn to cope in order to survive. This young Zulu woman now has two sons, one aged eight years and one just 12 months. Currently, she ekes out a living off the pitiful child grant she receives.

*"My dream job is to work in a supermarket as a packer or cleaner,"* says Nompumelelo with determination. *"I know that God will give me the strength to help me find a way. The Salvation Army has been so kind, not only have they helped me practically, but they have also taught me to trust in the Lord Jesus."*

Andile and Sandila Zulu\* never knew their mother and were raised by their father who passed away when they were 12 years old. The orphans were sent to live with their grandmother who died just two years later so an aunt took them in. According to Sandila life was not easy and what's kept them going since coming to their aunt eight years ago, has been the closeness of The Salvation Army Corps. *"Here we could make friends, find love and learn something meaningful"* he remarks.

Sandila completed grade 12 last year and has been put forward as a candidate for Salvation Army cadetship. Having 'grown up' in The Salvation Army, he believes he was saved to save others and has a calling to become a pastor.

*\*Names changed to protect identities.*



## WESTERN CAPE DIVISION INCORPORATING NAMIBIA AND ISLAND OF ST HELENA



The Western Cape Division is situated at the southernmost tip of South Africa where the cold waters of the Atlantic Ocean meet the warm waters of the Indian Ocean. The Division covers a picturesque area of the country and the demographics of the population stretch from the ultra-wealthy to those stricken by poverty.

The Division is not large and most of the Corps are situated in and around Cape Town, with the exception of Robertson Corps which is approximately 158 km from Cape Town. The Division stretches as far as Windhoek in Namibia and Island of St Helena, approximately 1,900 km west of the Namibian border in the South Atlantic Ocean.

Much of the work of The Salvation Army is conducted in township areas that are rife with substance abuse, poverty and unemployment. Teenage pregnancies are prolific. Our Edu-Care Centres are based on the Cape Flats, a gangster-ridden area where children going to school are often caught up in the middle of gang warfare. The Western Cape also has a high rate of domestic violence and abuse and crowded living conditions exacerbate the problem.

Our work in the Division is ongoing and makes a significant impact on the communities. Just the soup, clothing and blankets distributed mostly during the winter months, alleviate a degree of the suffering that these people endure on a daily basis.

**The Division comprises 16 Corps, 2 Outreaches and 5 Envoys.**

### SOCIAL CENTRES

#### 1 MEN'S HOSTEL

**Beth Rogelim Men's Hostel** is based on the Foreshore, Cape Town and cares for 88 pensioners and destitute men.

#### 1 SHELTER FOR ABUSED WOMEN AND THEIR CHILDREN

**Care Haven** is situated in the suburbs of Cape Town and cares for 28 abused women and their children.

#### 1 REHABILITATION CARE CENTRE

**Hesketh King Treatment Centre** is based in Stellenbosch in the Western Cape and cares for 60 residents.

#### 1 HOSPITAL

**Booth Memorial Hospital** is situated in Tamboerskloof and accommodates 106 patients.

**4 CRÈCHES/CHILD CARE CENTRES** situated in **Bonteheuwel, Mannenberg, Mitchells Plain and Care Haven** provide a safe and stimulating environment for 325 pre-school children.

*"Our home is made up of residents from many different backgrounds, each with his own story, each with his own needs and each with his own desire to be heard and accepted."*

### BETH ROGELIM

#### A Haven for the Aged and Destitute

The Mission of The Salvation Army's Beth Rogelim is to provide a compassionate, residential facility that encourages self-improvement, dignity, self-worth, rights and responsibilities of the individual residents. Beth Rogelim provides a home for men in their early 20's to age 80 and is geared to men who can care for themselves, but require the basics of food and accommodation. Although a Christian Home, residents from all faiths and backgrounds are welcome.

Beth Rogelim provides a home for residents who may otherwise have no other home, but the streets, and particularly those who have been abandoned by their families or have no families. However, the two stories below illustrate that there is so much more that Beth Rogelim offers.

#### JAN'S\* STORY

At the end of Covid restrictions, when international visitors were returning to South Africa, Beth Rogelim was asked to assist with a stranded Dutch tourist. Jan and his wife, both in their 70s, had been touring South Africa by car when they were involved in a serious accident. Jan's wife was critically injured and, as she was the one who handled all the travel arrangements, Jan was left totally stranded with no money, a few clothes in his rucksack and his ID documents, and no means of contacting family back in the Netherlands.

The hospital chaplain contacted Beth Rogelim for assistance. A room was prepared for Jan, who was shaken and distressed when he first arrived. He was totally bewildered; a situation that was exacerbated by his inability to understand English. However, between our Afrikaans and Jan's Dutch we managed to make him feel at home and settled him in.

We prayed with and counselled him and assured him that he was safe with us and that we would continue to pray for healing for his wife. Despite her serious injuries the positive news was that she was out of danger.

The next morning we were able to obtain details of Jan's children in the Netherlands and contacted them via email. This led to his daughter phoning Jan and providing him with details of their plans for repatriating the couple to the Netherlands. Within a few days Jan's wife was transferred to a hospital closer to Beth Rogelim and we were able to provide Jan with transport to visit his wife daily.

Within two weeks, the Dutch Embassy and insurance company were able to provide accommodation for Jan, but he had made so many friends at Beth Rogelim, was enjoying the food, accommodation and the many sights of

Cape Town that he elected to remain at Beth Rogelim until his daughter arrived from the Netherlands.

Once his wife had recovered enough to travel, Jan contacted us to bid farewell and extend heartfelt thanks for the love, kindness and support that we had extended to him.

#### PAUL'S\* STORY

Often, our residents do not realise their need for assisted living. This was the case with Paul, in his late 70's, who had been found in a delirious state and physically debilitated, and was admitted to a local hospital.

The social workers at the hospital were able to trace Paul's son who lived in the UK. However, the family did not have the necessary financial resources to assist Paul immediately. Paul's son was willing to have his father in the UK, but needed time to make the necessary passport and travel arrangements. Paul was discharged from hospital and the hospital social worker contacted Beth Rogelim for assistance.

When Paul arrived at Beth Rogelim, he had no clothing as whatever possessions he had when he arrived at the hospital, had been discarded. The social worker had found him some ill-fitting clothing from lost property so he arrived with trousers tied with string, no shoes and an oversized shirt.

Paul was clearly an educated man and had been an engineer, but alcohol abuse had taken its toll. Paul would often speak of his financial advisor and the wealth he had accumulated, but sadly what he had once, was now a thing of the past.

Paul needed a place of safety and protection from those who would take advantage of him and where he could regain his strength and dignity. In the three months that Paul stayed at Beth Rogelim, Paul attended our chapel services and re-dedicated his life to Christianity. He finally made his way to the UK to unite with his son and family, a stronger, fitter man who had found a purpose in life.

*"The Salvation Army's Beth Rogelim tries to meet those needs by providing a safe, loving home while also encouraging the residents and their families to be reconciled,"* says Major Eddie de Vos, the Administrator of the Centre.

*\*Names changed to protect identities.*

## REPORT OF THE CHIEF FINANCIAL OFFICER

The Salvation Army has experienced a deficit again during a period of uncertainty in Southern Africa. For the year ending 31 March 2023, The Salvation Army recorded an anticipated deficit of R 1,019m after utilising reserves to the amount of R 3,500m. It is important to note that there was a decline in Public Support from R42,559m (2022) to R41,855m (2023). This could be attributed to an uncertainty amongst our donors (as also reported during the previous year) and the effect of donor fatigue. It was noticeable that many donors still donated funds but restricted it to support people who were being severely impacted by natural disasters. We were also still experiencing a downward trend in church gatherings and tithing by our church members.

Income from investments increased to R 9,839m (2022 R 7,198m) due to the resumption of dividends received from our investments in health facilities, higher interest rates and the better than expected growth in investments.

Grants received from the Department of Health grew marginally. We do, however, expect a reduction in these grants in future as there is severe pressure on Government to curtail their programmes. There are also several health and programme related matters that will require to be addressed in terms of compliance, which will have a material impact on our cash flow.

Internal funding increased if compared to the previous year. We received an increase in the support from our International Headquarters during 2023 to assist with the funding of retired Salvation Army officers. Donations in kind (mainly food donated by supermarket chains) increased, for which we are grateful.

Administrative costs increased from R13,224m (2022) to R 14,017m. This is due to inflationary adjustments. We did create additional posts due to the growth of our missionary programme activities. The financial effect of this will be observed during the current financial year. This is in observing our long term strategic objectives. This still constitutes marginally more than 10% of total costs. This was unfortunately not in line with our target. We strive to keep this below 10% of total costs.

**Leon Viljoen MCom, CA(SA)**  
Chief Financial Officer

## STATEMENT OF COMPREHENSIVE INCOME FOR THE YEAR ENDING 31 MARCH

	R '000	R '000	R '000
	2023	2022	2021
Government funding	66 561	66 077	66 960
Public support	41 855	42 559	48 134
Investment income	9 839	7 198	5 572
Internal funding	16 029	9 660	13 937
Rent of properties	1 067	1 051	667
Donations in kind	2 027	1 279	595
	137 376	127 824	135 865

### EXPENSES

Programme work	124 378	117 719	123 118
Administrative costs	14 017	13 224	12 567
	138 395	130 943	135 685
<b>(DEFICIT)/SURPLUS</b>	<b>-1 019</b>	<b>-3 119</b>	<b>180</b>

## STATEMENT OF FINANCIAL POSITION 31 MARCH

### ASSETS

	R '000	R '000	R '000
	2023	2022	2021
Properties	99 820	88 377	87 989
Investments	111 732	96 787	102 227
Debtors	27 166	26 523	31 182
Other assets	2 354	2 307	3 119
Total Assets	241 071	213 994	224 517

### LIABILITIES AND NET ASSETS

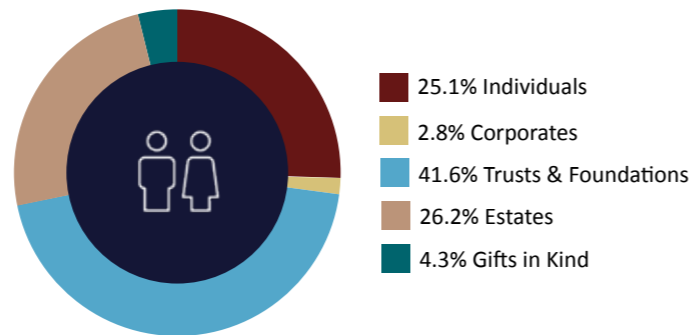
Reserves	128 170	101 526	105 972
Liabilities	19 272	19 147	19 899
Equity and Net Assets	93 629	93 321	98 646
Total Liabilities and Net Assets	241 071	213 994	224 517

## TO OUR SUPPORTERS, DONORS AND FRIENDS

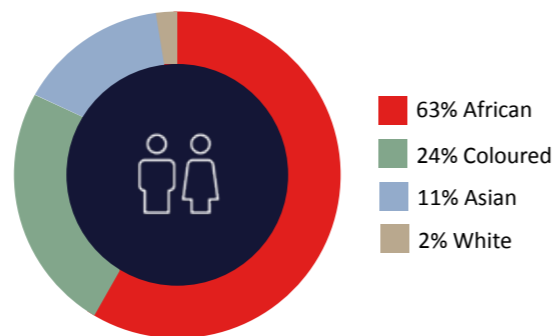
**DONATE  
TODAY**  
**MAKE A  
DIFFERENCE**



Our broad-based approach to funding ensures that we are successful in our fundraising endeavours. The diagram below indicates the levels of funding received from diverse sectors.



98% of contributions to The Salvation Army Southern Africa Territory directly benefit black (African, Indian, Coloured and Asian) South African citizens.



Our three-pronged strategy of “Saving Souls, Building Saints and Serving Suffering Humanity” as first envisaged by William Booth in 1865, would not have been achieved without the support of our loyal supporters, donors and friends.

The Salvation Army continues to provide services to people who do not have access to a fair and minimum standard of living. The three years of the Covid-19 pandemic clearly showed us that when we call for assistance, you, the donor, answer the call.

Our commitment in return is the assurance that when donating to The Salvation Army, your hard-earned money is aligned with a cause whose sole intention and commitment is to support our programmes.

All donations, no matter the size, are vital to the continuance of the work of The Salvation Army Southern Africa Territory and the communities we serve.

We sincerely thank each and every one of YOU, our loyal donors for helping us make an impact. When making a donation, be assured that your gift is going to the people who need it the most.

***Thank you for working with us to assist those in desperate need in this country.***

If you would like more information, make a donation or leave a lasting gift in your will, please contact [safpr@saf.salvationarmy.org](mailto:safpr@saf.salvationarmy.org)

As a registered PBO 930009713, Section 18A tax receipts are routinely provided for all donations.

## CONTACT US

THE SALVATION ARMY SOUTHERN AFRICA TERRITORY

### TERRITORIAL HEADQUARTERS

PO Box 30739  
Braamfontein 2017  
T: 011 718 6700

### COMMUNICATIONS DEPARTMENT

T: 011 718 6746  
Email: [safpr@saf.salvationarmy.org](mailto:safpr@saf.salvationarmy.org)

### DIVISIONAL HEADQUARTERS

**Central**  
PO Box 756  
Rosettenville 2130  
T: 011 408 6400  
Email: [central.dhq@saf.salvationarmy.org](mailto:central.dhq@saf.salvationarmy.org)

### Eastern Cape

PO Box 12514  
Centrahil 6006  
T: 041 585 5363  
Email: [dhq.escape@saf.salvationarmy.org](mailto:dhq.escape@saf.salvationarmy.org)

### Eastern KwaZulu-Natal

PO Box 1267  
Eshowe 3815  
T: 035 474 1132  
Email: [eastkzn.dhq@saf.salvationarmy.org](mailto:eastkzn.dhq@saf.salvationarmy.org)

### Limpopo

PO Box 3549  
Makhado 0920  
T: 015 516 6658  
Email: [Limpopo.dhq@saf.salvationarmy.org](mailto:Limpopo.dhq@saf.salvationarmy.org)

### Mid KwaZulu-Natal

PO Box 100061  
Scottsville 3209  
T: 033 386 3881/033 386 3530  
Email: [midkzn.dhq@saf.salvationarmy.org](mailto:midkzn.dhq@saf.salvationarmy.org)

### Mpumalanga and Eswatini

PO Box 1571  
Nelspruit 1200  
T: 013 741 2869  
Email: [Mpumalanga.dhq@saf.salvationarmy.org](mailto:Mpumalanga.dhq@saf.salvationarmy.org)

### Northern KwaZulu-Natal

PO Box 923  
Vryheid 3100  
T: 034 982 3113  
Email: [northernkzn.dhq@saf.salvationarmy.org](mailto:northernkzn.dhq@saf.salvationarmy.org)

### St. Helena

The Salvation Army, Jamestown  
Island of St Helena  
T: 290 2703  
Email: [salvationarmy@cwimail.sh](mailto:salvationarmy@cwimail.sh)

### Western Cape


PO Box 18179  
Wynberg 7824  
T: 021 761 8530/1/2/3/4  
Email: [wcape.dhq@saf.salvationarmy.org](mailto:wcape.dhq@saf.salvationarmy.org)

### Namibia

PO Box 26820  
Windhoek  
T: 264 61223881  
Email: [TSA.Namibia@SAF.salvationarmy.org](mailto:TSA.Namibia@SAF.salvationarmy.org)



## Growing Side by Side

1 Thessalonians 5:11 

---

**The Salvation Army**  
Southern Africa Territory  
NPO No 012-787  
PBO No 930009713  
[www.salvationarmy.org.za](http://www.salvationarmy.org.za)